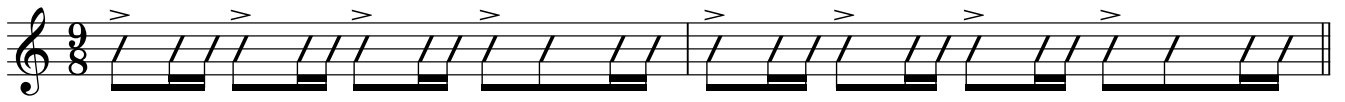


(3/4 + 3/8)

rampi rampi



A

E Dm⁽⁺¹¹⁾ E

E Dm⁽⁺¹¹⁾ E

Musical staff for section A, showing a treble clef and a key signature of one sharp (F#). The staff contains a whole rest in the first measure, followed by a whole rest in the second measure, and a whole rest in the third measure. Above the staff, the chord symbols E, Dm⁽⁺¹¹⁾, and E are written. Below the staff, the same chord symbols E, Dm⁽⁺¹¹⁾, and E are written.

B

Am E7 Am E7

Am E7 Am E7

Am E7 Am E7

Am E7 Am E7

Musical staff for section B, showing a treble clef and a key signature of one sharp (F#). The staff contains a series of eighth notes and quarter notes. Above the staff, the chord symbols Am, E7, Am, E7 are written. Below the staff, the same chord symbols Am, E7, Am, E7 are written.

C

Dm (/D /C /B /A) Dm

Dm E Dm E Dm (/D /C /B /A)

Dm Dm E Dm E

Musical staff for section C, showing a treble clef and a key signature of one sharp (F#). The staff contains a series of eighth notes and quarter notes. Above the staff, the chord symbols Dm (/D /C /B /A) Dm are written. Below the staff, the chord symbols Dm E Dm E Dm (/D /C /B /A) are written.

(LastTime molt rit.)

D.S.
Fine